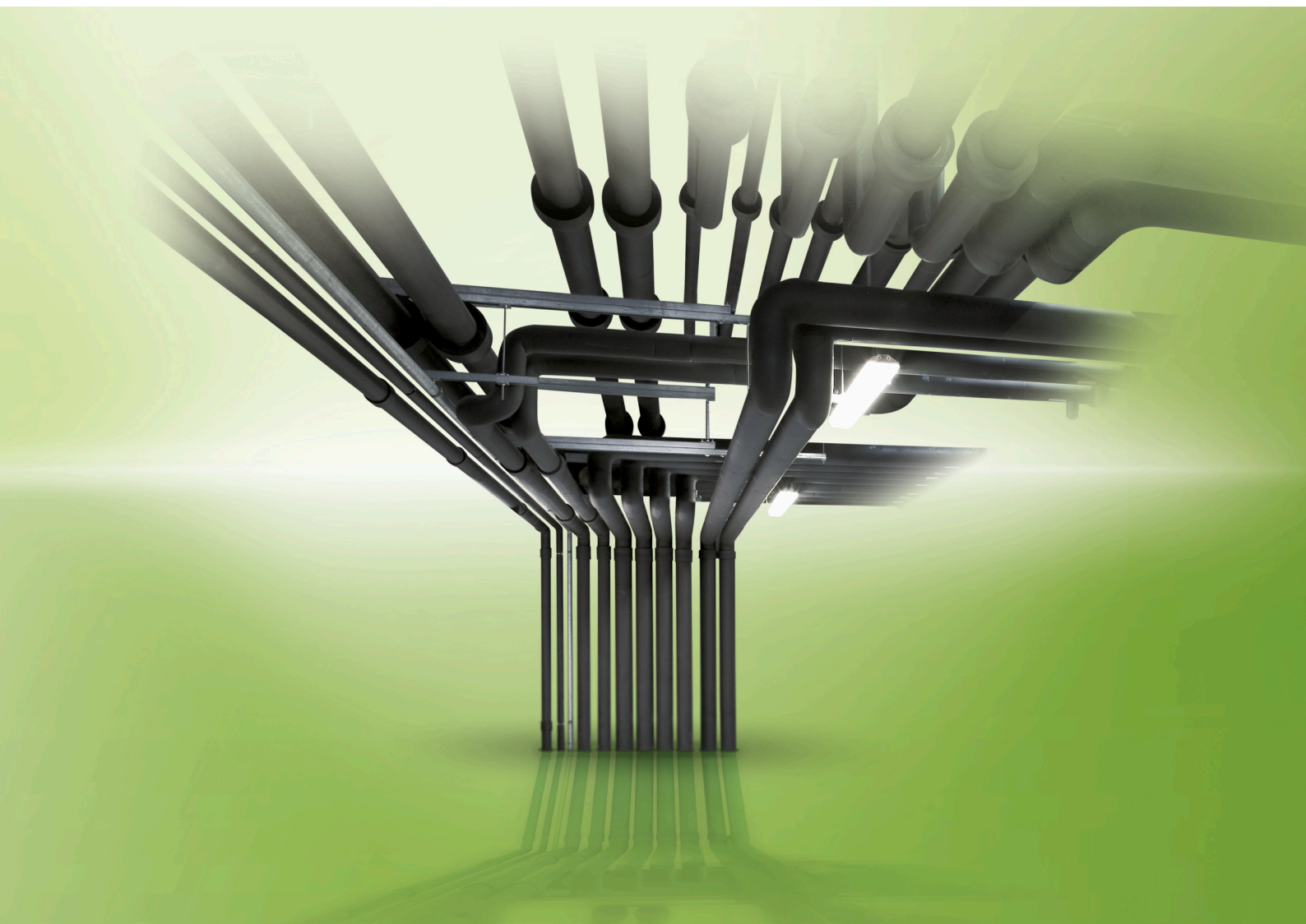




ARMAFLEX XG

THE VERSATILE SOLUTION FOR  
PROFESSIONALS



- Full range for easy application on all pipe and duct sizes
- Effective reduction of thermal losses
- System security with Armafix and Armaflex Adhesives
- Available as lap-seal and top-seal solutions

## Technical Data - Armaflex XG

|                              |   |
|------------------------------|---|
| Brief description            | Highly-flexible, closed-cell insulation material with high water vapour diffusion resistance and low thermal conductivity.  |
| Material type                | Elastomeric foam based on synthetic rubber. Factory made flexible elastomeric foam (FEF) according to EN 14304.   |
| Colour                       | black   |
| Material Special Information | Self-adhesive coating: pressure-sensitive adhesive coating on modified acrylate basis with mesh structure. Covered with polyethylene foil. Traces of silicon can be found on the protection paper/foil used to protect self-adhesive closures.                    |
| Applications                 | Insulation / protection of pipes, air ducts, vessels (incl. elbows, fittings, flanges etc.) of air-conditioning, refrigeration and process equipment to prevent condensation and save energy as well as insulation of pipes in sanitary and heating applications. |
| Remarks                      | Declaration of Performance is available in accordance with Article 7(3) of Regulation (EU) No 305/2011 on our homepage: <a href="http://www.armacell.com/DoP">www.armacell.com/DoP</a>  |

| Property                                 | Value/Assessment  | Test <sup>1</sup>    | Super-<br>vision <sup>2</sup> | Special Remark   |   |  |                                     |
|--|---|----------------------|-------------------------------|--|---|--|-------------------------------------|
| <b>Temperature Range</b>                 |   |                      |                               |  |   |  |                                     |
| Temperature Range                        | max. service temperature  | +110 °C              | EU 5702                       | o/●  | Tested acc.to EN 14706, EN 14707 and EN 14304 |  |                                     |
|  | ( +85 °C if sheet or tape is glued to the object with its whole surface.) |                      |                               |  |   |  |                                     |
|  | min. service temperature <sup>1</sup>                                     | -50 °C               |                               |  |   |  |                                     |
| <b>Thermal Conductivity</b>              |   |                      |                               |  |   |  |                                     |
| Thermal Conductivity                     | $\vartheta_m$ +/-0 °C   | .                    | $\lambda=$                    | EU 5702  | o/●   | Declared acc. to EN ISO 13787<br>Tested acc. to EN 12667<br>EN ISO 8497  |                                     |
|  | Tubes 6-19 mm   | $\lambda \leq 0,035$ | W/(m · K)                     | $[35 + 0,1 \cdot \vartheta_m + 0,0008 \cdot \vartheta_m^2]/1000$ |   |  |                                     |
|  | Sheets 6-25 mm, tape  | $\lambda \leq 0,035$ | W/(m · K)                     | $[35 + 0,1 \cdot \vartheta_m + 0,0008 \cdot \vartheta_m^2]/1000$ |   |  |                                     |
|  | tubes 25-40 mm  | $\lambda \leq 0,036$ | W/(m · K)                     | $[36 + 0,1 \cdot \vartheta_m + 0,0008 \cdot \vartheta_m^2]/1000$ |   |  |                                     |
|  | sheets 32-40 mm   | $\lambda \leq 0,036$ | W/(m · K)                     | $[36 + 0,1 \cdot \vartheta_m + 0,0008 \cdot \vartheta_m^2]/1000$ |   |  |                                     |
| <b>Water vapour diffusion resistance</b> |   |                      |                               |  |   |  |                                     |
| Water vapour diffusion resistance        | sheets 6-25 mm; tubes 6-19 mm   | $\mu$                | $\geq$                        | 10.000   | EU 5702                                       | o/●  | Tested acc. to EN 12086<br>EN 13469 |
|  | sheets 32-40 mm; tubes 25-40 mm   | $\mu$                | $\geq$                        | 7.000  |   |  |                                     |
| <b>Fire performance</b>                  |   |                      |                               |  |   |  |                                     |
| Reaction to fire                         | tubes   |                      | B <sub>L</sub> -s3, d0        | EU 5702  | o/●   | Classified acc. to EN 13501-1<br>Tested acc. to EN 13823<br>EN ISO 11925-2   |                                     |
|  | sheets  |                      | B-s3,d0                       |  |   |  |                                     |
|  | tape  |                      | B-s3, d0                      |  |   |  |                                     |
| Practical Fire Behaviour                 | Self-extinguishing, does not drip, does not spread flames                 |                      |                               |  |   |  |                                     |
| <b>Other technical features</b>          |   |                      |                               |  |   |  |                                     |
| Dimensions and tolerances                | In accordance with EN 14304, table 1                                      |                      |                               | EU 5702  | o/●   | Tested according to EN 822, EN 823, EN 13467   |                                     |
| UV resistance <sup>2</sup>               | Protection against UV-radiation is necessary.                             |                      |                               | TB 142   |   |  |                                     |
| Storage & Shelf life                     | Self-adhesive tapes, self-adhesive sheets, self-adhesive tubes: 1 year    |                      |                               |  |   | Can be stored in dry, clean rooms at normal relative humidity (50% to 70%) and ambient temperature (0 °C – 35 °C). |                                     |

1. For temperatures below -50 °C please contact our Customer Service Center to request for the corresponding technical information.

2. If Armaflex is applied under UV-radiation the material must be protected within 3 days with a covering.

\*1 Further documents such as test certificates, approvals and the like can be requested using the registration number given.

\*2 ●: Official supervision by independent institutes and /or test authorities  
○: Own in-factory quality monitoring

All data and technical information are based on results achieved under typical application conditions. Recipients of this information should, in their own interest and responsibility, clarify with us in due time whether or not the data and information apply to the intended application area. Installation instructions are available in our Armaflex installation manual. Please consult our Customer Service Center before insulating stainless steels. For some refrigerants the discharge temperature may exceed +110 °C, please consult our Customer Service Center for further information.

# Armaflex XG tubes



Length 2,0 m, Color black

| Pipe max. Outside-Ø [mm] | 6,0 mm<br>insulation thickness |          | 9,0 mm<br>insulation thickness |          |
|--------------------------|--------------------------------|----------|--------------------------------|----------|
|                          | Code                           | m/carton | Code                           | m/carton |
| 6                        | <b>XG-06X006</b>               | 496      | <b>XG-09X006</b>               | 352      |
| 8                        | <b>XG-06X008</b>               | 432      | <b>XG-09X008</b>               | 300      |
| 10                       | <b>XG-06X010 •</b>             | 380      | <b>XG-09X010</b>               | 266      |
| 12                       | <b>XG-06X012</b>               | 330      | <b>XG-09X012</b>               | 234      |
| 15                       | <b>XG-06X015</b>               | 280      | <b>XG-09X015</b>               | 200      |
| 18                       | <b>XG-06X018</b>               | 210      | <b>XG-09X018</b>               | 166      |
| 20                       | -                              | -        | <b>XG-09X020 •</b>             | 140      |
| 22                       | <b>XG-06X022</b>               | 170      | <b>XG-09X022</b>               | 140      |
| 25                       | -                              | -        | <b>XG-09X025 •</b>             | 108      |
| 28                       | <b>XG-06X028</b>               | 112      | <b>XG-09X028</b>               | 98       |
| 30                       | -                              | -        | <b>XG-09X030 •</b>             | 92       |
| 32                       | -                              | -        | <b>XG-09X032 •</b>             | 80       |
| 35                       | <b>XG-06X035 •</b>             | 92       | <b>XG-09X035</b>               | 76       |
| 40                       | -                              | -        | <b>XG-09X040 •</b>             | 66       |
| 42                       | -                              | -        | <b>XG-09X042</b>               | 64       |
| 48                       | -                              | -        | <b>XG-09X048</b>               | 54       |
| 50                       | -                              | -        | <b>XG-09X050 •</b>             | 46       |
| 54                       | -                              | -        | <b>XG-09X054</b>               | 52       |
| 60                       | -                              | -        | <b>XG-09X060</b>               | 48       |
| 64                       | -                              | -        | <b>XG-09X064</b>               | 44       |
| 70                       | -                              | -        | <b>XG-09X070 •</b>             | 32       |
| 76                       | -                              | -        | <b>XG-09X076</b>               | 32       |
| 89                       | -                              | -        | <b>XG-09X089</b>               | 28       |
| 102                      | -                              | -        | <b>XG-09X102 •</b>             | 26       |
| 108                      | -                              | -        | <b>XG-09X108 •</b>             | 26       |
| 110                      | -                              | -        | <b>XG-09X110 •</b>             | 24       |
| 114                      | -                              | -        | <b>XG-09X114</b>               | 24       |
| 125                      | -                              | -        | <b>XG-09X125 •</b>             | 14       |
| 140                      | -                              | -        | <b>XG-09X140 •</b>             | 14       |
| 160                      | -                              | -        | <b>XG-09X160 •</b>             | 10       |

# Armaflex XG tubes



Length 2,0 m, Color black

| Pipe max. Outside-Ø [mm] | 13,0 mm<br>insulation thickness |          | 19,0 mm<br>insulation thickness |          |
|--------------------------|---------------------------------|----------|---------------------------------|----------|
|                          | Code                            | m/carton | Code                            | m/carton |
| 6                        | XG-13X006                       | 200      | XG-19X006                       | 100      |
| 10                       | XG-13X010                       | 172      | XG-19X010                       | 92       |
| 12                       | XG-13X012                       | 162      | XG-19X012                       | 84       |
| 15                       | XG-13X015                       | 122      | XG-19X015                       | 72       |
| 18                       | XG-13X018                       | 104      | XG-19X018                       | 60       |
| 20                       | XG-13X020 ●                     | 104      | XG-19X020 ●                     | 58       |
| 22                       | XG-13X022                       | 100      | XG-19X022                       | 56       |
| 25                       | XG-13X025 ●                     | 88       | XG-19X025 ●                     | 50       |
| 28                       | XG-13X028                       | 82       | XG-19X028                       | 48       |
| 30                       | XG-13X030 ●                     | 72       | -                               | -        |
| 32                       | XG-13X032 ●                     | 64       | XG-19X032 ●                     | 36       |
| 35                       | XG-13X035                       | 60       | XG-19X035                       | 36       |
| 40                       | XG-13X040 ●                     | 50       | XG-19X040 ●                     | 32       |
| 42                       | XG-13X042                       | 50       | XG-19X042                       | 32       |
| 48                       | XG-13X048                       | 42       | XG-19X048                       | 28       |
| 50                       | XG-13X050 ●                     | 38       | XG-19X050 ●                     | 24       |
| 54                       | XG-13X054                       | 38       | XG-19X054                       | 24       |
| 60                       | XG-13X060                       | 32       | XG-19X060                       | 24       |
| 64                       | XG-13X064                       | 30       | XG-19X064                       | 20       |
| 70                       | XG-13X070 ●                     | 28       | XG-19X070 ●                     | 18       |
| 76                       | XG-13X076                       | 28       | XG-19X076                       | 18       |
| 80                       | XG-13X080 ●                     | 20       | XG-19X080 ●                     | 16       |
| 89                       | XG-13X089                       | 20       | XG-19X089                       | 16       |
| 102                      | XG-13X102 ●                     | 20       | XG-19X102                       | 16       |
| 108                      | XG-13X108                       | 20       | XG-19X108                       | 16       |
| 110                      | -                               | -        | XG-19X110 ●                     | 14       |
| 114                      | XG-13X114                       | 20       | XG-19X114                       | 14       |
| 125                      | XG-13X125                       | 18       | XG-19X125                       | 10       |
| 133                      | XG-13X133                       | 16       | XG-19X133                       | 10       |
| 140                      | XG-13X140 ●                     | 12       | XG-19X140                       | 10       |
| 160                      | XG-13X160                       | 12       | XG-19X160                       | 10       |
| 168                      | -                               | -        | XG-19X168                       | 8        |

| Pipe max. Outside-Ø [mm] | 25,0 mm<br>insulation thickness |          | 30,0 mm<br>insulation thickness |          |
|--------------------------|---------------------------------|----------|---------------------------------|----------|
|                          | Code                            | m/carton | Code                            | m/carton |
| 10                       | XG-25X010                       | 60       | -                               | -        |
| 12                       | XG-25X012                       | 54       | -                               | -        |
| 15                       | XG-25X015                       | 48       | -                               | -        |
| 18                       | XG-25X018                       | 40       | -                               | -        |
| 20                       | XG-25X020                       | 38       | -                               | -        |
| 22                       | XG-25X022                       | 40       | -                               | -        |
| 25                       | XG-25X025                       | 34       | -                               | -        |
| 28                       | XG-25X028                       | 36       | -                               | -        |
| 30                       | XG-25X030 ●                     | 30       | -                               | -        |
| 32                       | XG-25X032 ●                     | -        | -                               | -        |
| 35                       | XG-25X035                       | 24       | -                               | -        |
| 40                       | XG-25X040                       | 12       | -                               | -        |
| 42                       | XG-25X042                       | 24       | XG-30X042 ●                     | 22       |
| 48                       | XG-25X048                       | 20       | XG-30X048 ●                     | 18       |
| 54                       | XG-25X054                       | 18       | XG-30X054 ●                     | 16       |
| 60                       | XG-25X060                       | 18       | XG-30X060 ●                     | 12       |
| 64                       | XG-25X064                       | 16       | XG-30X064 ●                     | 12       |
| 70                       | XG-25X070                       | -        | -                               | -        |
| 76                       | XG-25X076                       | 12       | XG-30X076 ●                     | 10       |
| 89                       | XG-25X089                       | 12       | XG-30X089 ●                     | 10       |
| 102                      | XG-25X102 ●                     | 8        | -                               | -        |
| 108                      | XG-25X108                       | 8        | -                               | -        |
| 114                      | XG-25X114                       | 10       | -                               | -        |
| 140                      | XG-25X140 ●                     | 4        | -                               | -        |

# Armaflex XG tubes



Length 2,0 m, Color black

| Pipe max. Outside-Ø [mm] | 32,0 mm<br>insulation thickness |          | 40,0 mm<br>insulation thickness |          |
|--------------------------|---------------------------------|----------|---------------------------------|----------|
|                          | Code                            | m/carton | Code                            | m/carton |
| 15                       | XG-32X015                       | 32       | -                               | -        |
| 18                       | XG-32X018                       | 32       | -                               | -        |
| 20                       | XG-32X020                       | 24       | -                               | -        |
| 22                       | XG-32X022                       | 24       | -                               | -        |
| 25                       | XG-32X025                       | 24       | -                               | -        |
| 28                       | XG-32X028                       | 24       | XG-40X028                       | 18       |
| 32                       | XG-32X032                       | 18       | -                               | -        |
| 35                       | XG-32X035                       | 18       | XG-40X035 ●                     | 16       |
| 40                       | XG-32X040 ●                     | 18       | -                               | -        |
| 42                       | XG-32X042                       | 18       | XG-40X042                       | 12       |
| 48                       | XG-32X048                       | 18       | XG-40X048                       | 12       |
| 50                       | XG-32X050 ●                     | 12       | -                               | -        |
| 54                       | XG-32X054                       | 12       | XG-40X054                       | 10       |
| 60                       | XG-32X060                       | 10       | XG-40X060                       | 10       |
| 64                       | XG-32X064                       | 10       | XG-40X064 ●                     | 10       |
| 70                       | XG-32X070 ●                     | 10       | -                               | -        |
| 76                       | XG-32X076                       | 10       | XG-40X076                       | 8        |
| 80                       | XG-32X080 ●                     | 10       | -                               | -        |
| 89                       | XG-32X089                       | 10       | XG-40X089 ●                     | 6        |
| 102                      | XG-32X102                       | 6        | XG-40X102 ●                     | 8        |
| 108                      | XG-32X108                       | 6        | XG-40X108 ●                     | 4        |
| 114                      | XG-32X114                       | 8        | XG-40X114                       | 6        |
| 125                      | XG-32X125 ●                     | 6        | XG-40X125 ●                     | 4        |
| 133                      | XG-32X133 ●                     | 6        | -                               | -        |
| 140                      | XG-32X140                       | 6        | XG-40X140 ●                     | 4        |
| 160                      | XG-32X160                       | 4        | XG-40X160 ●                     | 4        |
| 168                      | -                               | -        | XG-40X168 ●                     | 4        |

**Length tolerance for tubes**

±1,5 %

**Thickness tolerance**

≤ 8 mm: ±1,0 mm  
 9 - 18 mm: ±1,5 mm  
 19 - 31 mm: ±2,5 mm  
 > 31 mm: ±3,0 mm

● Item not in stock. Delivery on request. [MTO]

# Armaflex XG tubes [additional table to display with itemgroups of local regulation]



| Pipe max. Outside-Ø [mm] | [ES] For Interior application [0-10 °C]<br>[ES] Temperature of the medium 0 °C to 10 °C |          | [ES] For Interior application [40-60 °C]<br>[ES] Temperature of the medium 40 °C to 60 °C |          |
|--------------------------|---|----------|---|----------|
|                          | Code  | m/carton | Code  | m/carton |
| 12                       | XG-25X012   | 54       | -   | -        |
| 15                       | XG-25X015   | 48       | XG-32X015   | 32       |
| 18                       | XG-25X018   | 40       | XG-32X018   | 32       |
| 20                       | -   | -        | XG-32X020   | 24       |
| 22                       | XG-25X022   | 40       | XG-32X022   | 24       |
| 25                       | -   | -        | XG-32X025   | 24       |
| 28                       | XG-25X028   | 36       | XG-32X028   | 24       |
| 32                       | -   | -        | XG-32X032   | 18       |
| 35                       | XG-25X035   | 24       | XG-32X035   | 18       |
| 42                       | XG-30X042 ●   | 22       | XG-30X042 ●   | 22       |
| 48                       | XG-30X048 ●   | 18       | XG-30X048 ●   | 18       |
| 54                       | XG-30X054 ●   | 16       | XG-30X054 ●   | 16       |
| 60                       | XG-30X060 ●   | 12       | XG-30X060 ●   | 12       |
| 64                       | XG-30X064 ●   | 12       | XG-30X064 ●   | 12       |
| 76                       | XG-30X076 ●   | 10       | XG-30X076 ●   | 10       |
| 89                       | XG-30X089 ●   | 10       | XG-30X089 ●   | 10       |
| 102                      | XG-40X102 ●   | 8        | XG-32X102   | 6        |
| 114                      | -   | -        | XG-32X114   | 8        |
| 125                      | XG-40X125 ●   | 4        | XG-32X125 ●   | 6        |
| 140                      | -   | -        | XG-32X140   | 6        |
| 160                      | -   | -        | XG-40X160 ●   | 4        |
| 168                      | -   | -        | XG-40X168 ●   | 4        |

| Pipe max. Outside-Ø [mm] | [ES] For Interior application >60-100 °C<br>[ES] Temperature of the medium > 60 °C to 100 °C |          | [PT] For Interior application [0-10 °C]<br>[PT] Temperature of the medium 0 °C to 10 °C |          |
|--------------------------|--|----------|---|----------|
|                          | Code   | m/carton | Code  | m/carton |
| 6                        | -  | -        | XG-19X006   | 100      |
| 10                       | -  | -        | XG-19X010   | 92       |
| 12                       | XG-25X012  | 54       | XG-19X012   | 84       |
| 15                       | XG-25X015  | 48       | XG-19X015   | 72       |
| 18                       | XG-25X018  | 40       | XG-19X018   | 60       |
| 20                       | -  | -        | XG-19X020 ●   | 58       |
| 22                       | XG-25X022  | 40       | XG-19X022   | 56       |
| 25                       | -  | -        | XG-19X025 ●   | 50       |
| 28                       | XG-25X028  | 36       | XG-19X028   | 48       |
| 32                       | -  | -        | XG-19X032 ●   | 36       |
| 35                       | XG-25X035  | 24       | XG-19X035   | 36       |
| 42                       | XG-30X042 ●  | 22       | XG-30X042 ●   | 22       |
| 48                       | XG-30X048 ●  | 18       | XG-30X048 ●   | 18       |
| 54                       | XG-30X054 ●  | 16       | XG-30X054 ●   | 16       |
| 60                       | XG-30X060 ●  | 12       | XG-30X060 ●   | 12       |
| 64                       | XG-30X064 ●  | 12       | XG-30X064 ●   | 12       |
| 76                       | XG-30X076 ●  | 10       | XG-30X076 ●   | 10       |
| 89                       | XG-30X089 ●  | 10       | XG-30X089 ●   | 10       |
| 102                      | XG-40X102 ●  | 8        | XG-40X102 ●   | 8        |
| 114                      | XG-40X114  | 6        | -   | -        |
| 125                      | XG-40X125 ●  | 4        | XG-40X125 ●   | 4        |
| 140                      | XG-40X140 ●  | 4        | -   | -        |
| 160                      | XG-40X160 ●  | 4        | -   | -        |
| 168                      | XG-40X168 ●  | 4        | -   | -        |

# Armaflex XG tubes [additional table to display with itemgroups of local regulation]



| Pipe max. Outside-Ø [mm] | [PT] For Interior application [40-65 °C]<br>[PT] Temperature of the medium 40 °C to 65 °C |          | [PT] For Interior application [66-100 °C]<br>[PT] Temperature of the medium 66 °C to 100 °C |          |
|--------------------------|---|----------|---|----------|
|                          | Code  | m/carton | Code  | m/carton |
| 6                        | XG-19X006   | 100      | XG-19X006   | 100      |
| 10                       | XG-19X010   | 92       | XG-19X010   | 92       |
| 12                       | XG-19X012   | 84       | XG-19X012   | 84       |
| 15                       | XG-19X015   | 72       | XG-19X015   | 72       |
| 18                       | XG-19X018   | 60       | XG-19X018   | 60       |
| 20                       | XG-19X020 ●   | 58       | XG-19X020 ●   | 58       |
| 22                       | XG-19X022   | 56       | XG-19X022   | 56       |
| 25                       | XG-19X025 ●   | 50       | XG-19X025 ●   | 50       |
| 28                       | XG-19X028   | 48       | XG-19X028   | 48       |
| 32                       | XG-19X032 ●   | 36       | XG-19X032 ●   | 36       |
| 35                       | XG-19X035   | 36       | XG-19X035   | 36       |
| 42                       | XG-19X042   | 32       | XG-30X042 ●   | 22       |
| 48                       | XG-19X048   | 28       | XG-30X048 ●   | 18       |
| 54                       | XG-19X054   | 24       | XG-30X054 ●   | 16       |
| 60                       | XG-30X060 ●   | 12       | XG-30X060 ●   | 12       |
| 64                       | XG-30X064 ●   | 12       | XG-30X064 ●   | 12       |
| 76                       | XG-30X076 ●   | 10       | XG-30X076 ●   | 10       |
| 89                       | XG-30X089 ●   | 10       | XG-30X089 ●   | 10       |
| 102                      | XG-32X102   | 6        | XG-40X102 ●   | 8        |
| 114                      | XG-32X114   | 8        | -   | -        |
| 125                      | XG-32X125 ●   | 6        | XG-40X125 ●   | 4        |
| 140                      | XG-32X140   | 6        | -   | -        |
| 160                      | XG-32X160   | 4        | -   | -        |

| Pipe max. Outside-Ø [mm] | [FR] RT 2012- Heating and Plumbing - Standard<br>Class 2 - TS/LS [60 °C]<br>[FR] Temp. of the medium 60 °C, ambient temperature<br>10 °C |          | [FR] RT 2012- Heating and Plumbing - Standard<br>Class 2 [60 °C]<br>[FR] Temp. of the medium 60 °C, ambient temperature<br>10 °C |          |
|--------------------------|--|----------|--|----------|
|                          | Code   | m/carton | Code   | m/carton |
| 12                       | XG-09X015-TS ●   | 200      | XG-09X012  | 234      |
| 15                       | XG-09X015-TS ●   | 200      | XG-09X015  | 200      |
| 18                       | XG-13X018-TS   | 104      | XG-13X018  | 104      |
| 20                       | XG-13X022-TS   | 100      | XG-13X020 ●  | 104      |
| 22                       | XG-13X022-TS   | 100      | XG-13X022  | 100      |
| 25                       | XG-19X028-TS   | 48       | XG-19X025 ●  | 50       |
| 28                       | XG-19X028-TS   | 48       | XG-19X028  | 48       |
| 32                       | XG-19X035-TS   | 36       | XG-19X032 ●  | 36       |
| 35                       | XG-19X035-TS   | 36       | XG-19X035  | 36       |
| 40                       | XG-25X042-TS   | 24       | XG-25X042  | 24       |
| 42                       | XG-25X042-TS   | 24       | XG-25X042  | 24       |
| 48                       | XG-25X048-TS   | 20       | XG-25X048  | 20       |
| 50                       | XG-32X054-TS   | 12       | XG-32X050 ●  | 12       |
| 54                       | XG-32X054-TS   | 12       | -  | -        |
| 60                       | XG-32X060-TS   | 10       | XG-32X060  | 10       |
| 64                       | XG-32X064-TS   | 10       | XG-32X064  | 10       |
| 70                       | -  | -        | XG-32X070 ●  | 10       |
| 76                       | XG-32X076-TS   | 10       | XG-32X076  | 10       |
| 80                       | -  | -        | XG-32X080 ●  | 10       |
| 89                       | XG-32X089-TS   | 10       | XG-32X089  | 10       |
| 102                      | -  | -        | XG-40X102 ●  | 8        |
| 108                      | -  | -        | XG-40X108 ●  | 4        |
| 114                      | -  | -        | XG-40X114  | 6        |
| 140                      | -  | -        | XG-40X140 ●  | 4        |
| 160                      | -  | -        | XG-40X160 ●  | 4        |
| 168                      | -  | -        | XG-40X168 ●  | 4        |

# Armaflex XG tubes [additional table to display with itemgroups of local regulation]



| Pipe max. Outside-Ø [mm] | [FR] BBC - Heating and Plumbing - Standard Class 4 - TS/LS [60 °C]<br>[FR] Temp. of the medium 60 °C, ambient temperature 10 °C |          | [FR] BBC - Heating and Plumbing - Standard Class 4 [60 °C]<br>[FR] Temp. of the medium 60 °C, ambient temperature 10 °C |          |
|--------------------------|---|----------|---|----------|
|                          | Code  | m/carton | Code  | m/carton |
| 12                       | XG-13X012-TS ●  | 162      | XG-13X012   | 162      |
| 15                       | XG-19X015-TS  | 72       | XG-19X015   | 72       |
| 18                       | XG-25X018-TS ●  | 40       | XG-25X018   | 40       |
| 20                       | XG-25X022-TS  | 40       | XG-25X020   | 38       |
| 20                       | -   | -        | XG-25X022   | 40       |
| 22                       | XG-32X022-TS  | 28       | XG-32X022   | 24       |
| 25                       | XG-32X028-TS  | 24       | XG-32X028   | 24       |
| 28                       | XG-32X028-TS  | 24       | XG-32X028   | 24       |
| 30                       | -   | -        | XG-40X035 ●   | 16       |
| 32                       | -   | -        | XG-40X035 ●   | 16       |
| 35                       | -   | -        | XG-40X035 ●   | 16       |

| Pipe max. Outside-Ø [mm] | [FR] RT 2012- Cold - Standard Class 3 - TS/LS [7 °C]<br>[FR] Temp. of the medium 7 °C, ambient temperature 26 °C |          | [FR] RT 2012- Cold - Standard Class 3 [7 °C]<br>[FR] Temp. of the medium 7 °C, ambient temperature 26 °C |          |
|--------------------------|--|----------|--|----------|
|                          | Code   | m/carton | Code   | m/carton |
| 12                       | XG-19X015-LS ●   | 72       | XG-13X012  | 162      |
| 15                       | XG-19X015-LS ●   | 72       | XG-13X015  | 122      |
| 18                       | XG-19X018-LS   | 60       | XG-19X018  | 60       |
| 20                       | XG-19X022-LS   | 56       | XG-19X020 ●  | 58       |
| 22                       | XG-19X022-LS   | 56       | XG-19X022  | 56       |
| 25                       | XG-19X028-LS   | 48       | XG-19X025 ●  | 50       |
| 28                       | XG-25X028-LS   | 36       | XG-25X028  | 36       |
| 30                       | XG-25X035-LS   | 24       | XG-25X030 ●  | 30       |
| 32                       | XG-25X035-LS   | 24       | XG-25X035  | 24       |
| 35                       | XG-32X035-LS   | 18       | XG-32X035  | 18       |
| 40                       | XG-32X042-LS   | 18       | XG-32X040 ●  | 18       |
| 42                       | XG-32X042-LS   | 18       | -  | -        |
| 48                       | XG-32X048-LS   | 18       | -  | -        |
| 50                       | XG-40X054-LS ●   | 10       | XG-40X054  | 10       |
| 54                       | XG-40X054-LS ●   | 10       | XG-40X054  | 10       |
| 60                       | -  | -        | XG-40X060  | 10       |
| 64                       | -  | -        | XG-40X064 ●  | 10       |
| 70                       | XG-40X076-LS ●   | 8        | XG-40X076  | 8        |
| 76                       | XG-40X076-LS ●   | 8        | XG-40X076  | 8        |

| Pipe max. Outside-Ø [mm] | [FR] BBC - Cold - Standard Class 4 - TS/LS [7 °C, 26 °C]<br>[FR] Temp. of the medium 7 °C, ambient temperature 26 °C |          | [FR] BBC - Cold - Standard Class 4 [7 °C, 26 °C]<br>[FR] Temp. of the medium 7 °C, ambient temperature 26 °C |          |
|--------------------------|--|----------|--|----------|
|                          | Code   | m/carton | Code   | m/carton |
| 12                       | XG-19X015-LS ●   | 72       | XG-13X012  | 162      |
| 15                       | XG-19X015-LS ●   | 72       | XG-19X015  | 72       |
| 18                       | XG-19X018-LS   | 60       | XG-19X018  | 60       |
| 20                       | XG-25X022-LS ●   | 40       | XG-25X022  | 40       |
| 22                       | XG-25X022-LS ●   | 40       | XG-25X022  | 40       |
| 25                       | XG-32X028-LS   | 24       | XG-25X025  | 34       |
| 25                       | -  | -        | XG-32X028  | 24       |
| 28                       | XG-32X028-LS   | 24       | XG-32X028  | 24       |
| 30                       | XG-32X035-LS   | 18       | XG-32X035  | 18       |
| 32                       | -  | -        | XG-40X035 ●  | 16       |
| 35                       | -  | -        | XG-40X035 ●  | 16       |
| 40                       | XG-40X042-LS ●   | 12       | XG-40X042  | 12       |
| 42                       | XG-40X042-LS ●   | 12       | XG-40X042  | 12       |

|                            |             |         |
|----------------------------|-------------|---------|
| <b>Thickness tolerance</b> | ≤ 8 mm:     | ±1,0 mm |
|                            | 9 - 18 mm:  | ±1,5 mm |
|                            | 19 - 31 mm: | ±2,5 mm |
|                            | > 31 mm:    | ±3,0 mm |

● Item not in stock. Delivery on request. [MTO]



## Armaflex XG tubes lap-seal



Length 2,0 m, Color black, Triple adhesive tube (seams + insulating overlap), for cold applications.

| Pipe max. Outside-Ø [mm] | 9,0 mm<br>insulation thickness |          | 19,0 mm<br>insulation thickness |          |
|--------------------------|--------------------------------|----------|---------------------------------|----------|
|                          | Code                           | m/carton | Code                            | m/carton |
| 15                       | -                              | -        | XG-19X015-LS ●                  | 72       |
| 18                       | XG-09X018-LS ●                 | 140      | XG-19X018-LS                    | 60       |
| 22                       | XG-09X022-LS ●                 | 136      | XG-19X022-LS                    | 56       |
| 28                       | XG-09X028-LS ●                 | 98       | XG-19X028-LS                    | 48       |
| 35                       | XG-09X035-LS ●                 | 72       | XG-19X035-LS                    | 36       |
| 42                       | XG-09X042-LS ●                 | 60       | XG-19X042-LS                    | 32       |
| 54                       | XG-09X054-LS ●                 | 46       | -                               | -        |
| 60                       | -                              | -        | XG-19X060-LS                    | 24       |
| 70                       | XG-09X070-LS ●                 | 32       | -                               | -        |
| 114                      | -                              | -        | XG-19X114-LS ●                  | 14       |

| Pipe max. Outside-Ø [mm] | 25,0 mm<br>insulation thickness |          | 32,0 mm<br>insulation thickness |          |
|--------------------------|---------------------------------|----------|---------------------------------|----------|
|                          | Code                            | m/carton | Code                            | m/carton |
| 22                       | XG-25X022-LS ●                  | 40       | XG-32X022-LS                    | 24       |
| 28                       | XG-25X028-LS                    | 36       | XG-32X028-LS                    | 24       |
| 35                       | XG-25X035-LS                    | 24       | XG-32X035-LS                    | 18       |
| 42                       | XG-25X042-LS                    | 24       | XG-32X042-LS                    | 18       |
| 48                       | XG-25X048-LS                    | 20       | XG-32X048-LS                    | 18       |
| 76                       | XG-25X076-LS ●                  | 12       | -                               | -        |
| 89                       | XG-25X089-LS ●                  | 12       | -                               | -        |
| 102                      | -                               | -        | XG-32X102-LS                    | 6        |

| Pipe max. Outside-Ø [mm] | 40,0 mm<br>insulation thickness |          |   |   |
|--------------------------|---------------------------------|----------|---|---|
|                          | Code                            | m/carton |   |   |
| 42                       | XG-40X042-LS ●                  | 12       | - | - |
| 54                       | XG-40X054-LS ●                  | 10       | - | - |
| 76                       | XG-40X076-LS ●                  | 8        | - | - |
| 89                       | XG-40X089-LS ●                  | 6        | - | - |

**Length tolerance for tubes**

±1,5 %

**Thickness tolerance**

≤ 8 mm: ±1,0 mm  
 9 - 18 mm: ±1,5 mm  
 19 - 31 mm: ±2,5 mm  
 > 31 mm: ±3,0 mm

● Item not in stock. Delivery on request. [MTO]

## Armaflex XG tubes top-seal



Length 2,0 m, Color black

| Pipe max. Outside-Ø [mm] | 9,0 mm<br>insulation thickness |          | 13,0 mm<br>insulation thickness |          |
|--------------------------|--------------------------------|----------|---------------------------------|----------|
|                          | Code                           | m/carton | Code                            | m/carton |
| 12                       | -                              | -        | XG-13X012-TS ●                  | 162      |
| 15                       | XG-09X015-TS ●                 | 200      | XG-13X015-TS                    | 122      |
| 18                       | XG-09X018-TS                   | 166      | XG-13X018-TS                    | 104      |
| 22                       | XG-09X022-TS                   | 140      | XG-13X022-TS                    | 100      |
| 28                       | XG-09X028-TS                   | 98       | XG-13X028-TS                    | 82       |
| 35                       | XG-09X035-TS                   | 76       | XG-13X035-TS                    | 60       |
| 42                       | XG-09X042-TS                   | 64       | XG-13X042-TS                    | 50       |
| 48                       | XG-09X048-TS                   | 54       | XG-13X048-TS                    | 42       |
| 54                       | XG-09X054-TS                   | 52       | XG-13X054-TS                    | 38       |
| 60                       | XG-09X060-TS ●                 | 48       | XG-13X060-TS                    | 32       |
| 64                       | -                              | -        | XG-13X064-TS ●                  | 30       |
| 76                       | -                              | -        | XG-13X076-TS                    | 28       |
| 89                       | -                              | -        | XG-13X089-TS                    | 20       |

## Armaflex XG tubes top-seal



Length 2,0 m, Color black

| Pipe max. Outside-Ø [mm] | 19,0 mm<br>insulation thickness |          | 25,0 mm<br>insulation thickness |          |
|--------------------------|---------------------------------|----------|---------------------------------|----------|
|                          | Code                            | m/carton | Code                            | m/carton |
| 12                       | XG-19X012-TS                    | 84       | -                               | -        |
| 15                       | XG-19X015-TS                    | 72       | -                               | -        |
| 18                       | XG-19X018-TS                    | 60       | XG-25X018-TS ●                  | 40       |
| 22                       | XG-19X022-TS                    | 56       | XG-25X022-TS                    | 40       |
| 28                       | XG-19X028-TS                    | 48       | XG-25X028-TS                    | 36       |
| 35                       | XG-19X035-TS                    | 36       | XG-25X035-TS                    | 28       |
| 42                       | XG-19X042-TS                    | 32       | XG-25X042-TS                    | 24       |
| 48                       | XG-19X048-TS                    | 28       | XG-25X048-TS                    | 20       |
| 54                       | -                               | -        | XG-25X054-TS                    | 18       |
| 60                       | XG-19X060-TS                    | 24       | XG-25X060-TS                    | 18       |
| 64                       | XG-19X064-TS                    | 20       | XG-25X064-TS                    | 16       |
| 76                       | XG-19X076-TS                    | 18       | XG-25X076-TS                    | 12       |
| 89                       | XG-19X089-TS                    | 16       | XG-25X089-TS                    | 12       |

| Pipe max. Outside-Ø [mm] | 32,0 mm<br>insulation thickness |          | 40,0 mm<br>insulation thickness |          |
|--------------------------|---------------------------------|----------|---------------------------------|----------|
|                          | Code                            | m/carton | Code                            | m/carton |
| 18                       | XG-32X018-TS ●                  | 32       | -                               | -        |
| 22                       | XG-32X022-TS                    | 28       | XG-40X022-TS                    | -        |
| 28                       | XG-32X028-TS                    | 24       | XG-40X028-TS                    | 18       |
| 35                       | XG-32X035-TS                    | 18       | XG-40X035-TS                    | 16       |
| 42                       | XG-32X042-TS                    | 18       | XG-40X042-TS                    | 12       |
| 48                       | XG-32X048-TS                    | 18       | XG-40X048-TS                    | 12       |
| 54                       | XG-32X054-TS                    | 12       | XG-40X054-TS                    | 10       |
| 60                       | XG-32X060-TS                    | 10       | XG-40X060-TS                    | 10       |
| 64                       | XG-32X064-TS                    | 10       | XG-40X064-TS                    | 10       |
| 70                       | XG-32X070-TS ●                  | 10       | XG-40X070-TS                    | -        |
| 76                       | XG-32X076-TS                    | 10       | XG-40X076-TS                    | 8        |
| 80                       | XG-32X080-TS ●                  | 10       | -                               | -        |
| 89                       | XG-32X089-TS                    | 10       | XG-40X089-TS                    | 6        |

Length tolerance for tubes

±1,5 %

Thickness tolerance

≤ 8 mm: ±1,0 mm  
 9 - 18 mm: ±1,5 mm  
 19 - 31 mm: ±2,5 mm  
 > 31 mm: ±3,0 mm

● Item not in stock. Delivery on request. [MTO]

## Armaflex XG tubes self-adhesive



Length 2,0 m, Color black

| Pipe max. Outside-Ø [mm] | 9,0 mm<br>insulation thickness |          | 13,0 mm<br>insulation thickness |          |
|--------------------------|--------------------------------|----------|---------------------------------|----------|
|                          | Code                           | m/carton | Code                            | m/carton |
| 12                       | XG-09X012-A                    | 234      | XG-13X012-A                     | 162      |
| 15                       | XG-09X015-A                    | 200      | XG-13X015-A                     | 122      |
| 18                       | XG-09X018-A                    | 166      | XG-13X018-A                     | 104      |
| 22                       | XG-09X022-A                    | 140      | XG-13X022-A                     | 100      |
| 28                       | XG-09X028-A                    | 98       | XG-13X028-A                     | 82       |
| 35                       | XG-09X035-A                    | 76       | XG-13X035-A                     | 60       |
| 42                       | XG-09X042-A                    | 64       | XG-13X042-A                     | 50       |
| 48                       | XG-09X048-A ●                  | 54       | XG-13X048-A                     | 42       |
| 54                       | XG-09X054-A ●                  | 52       | XG-13X054-A                     | 38       |
| 60                       | XG-09X060-A ●                  | 48       | XG-13X060-A                     | 32       |
| 76                       | -                              | -        | XG-13X076-A                     | 28       |
| 89                       | -                              | -        | XG-13X089-A                     | 20       |

## Armaflex XG tubes self-adhesive



Length 2,0 m, Color black

| Pipe max. Outside-Ø [mm] | 19,0 mm<br>insulation thickness |          | 25,0 mm<br>insulation thickness |          |
|--------------------------|---------------------------------|----------|---------------------------------|----------|
|                          | Code                            | m/carton | Code                            | m/carton |
| 15                       | XG-19X015-A ●                   | 72       | -                               | -        |
| 18                       | XG-19X018-A                     | 60       | XG-25X018-A ●                   | 40       |
| 22                       | XG-19X022-A                     | 56       | XG-25X022-A                     | 40       |
| 28                       | XG-19X028-A                     | 48       | XG-25X028-A                     | 36       |
| 35                       | XG-19X035-A                     | 36       | XG-25X035-A                     | 24       |
| 42                       | XG-19X042-A                     | 32       | XG-25X042-A                     | 24       |
| 48                       | XG-19X048-A                     | 28       | XG-25X048-A                     | 20       |
| 54                       | XG-19X054-A                     | 24       | XG-25X054-A                     | 18       |
| 60                       | XG-19X060-A                     | 24       | XG-25X060-A                     | 18       |
| 76                       | XG-19X076-A                     | 18       | XG-25X076-A                     | 12       |
| 89                       | XG-19X089-A                     | 16       | XG-25X089-A                     | 12       |

Length tolerance for tubes

±1,5 %

Thickness tolerance

≤ 8 mm: ±1,0 mm  
 9 - 18 mm: ±1,5 mm  
 19 - 31 mm: ±2,5 mm  
 > 31 mm: ±3,0 mm

● Item not in stock. Delivery on request. [MTO]

## Armaflex XG tubes endless



Color black

| Pipe max. Outside-Ø [mm] | 6,0 mm<br>insulation thickness |          | 9,0 mm<br>insulation thickness |          |
|--------------------------|--------------------------------|----------|--------------------------------|----------|
|                          | Code                           | m/carton | Code                           | m/carton |
| 6                        | XG-06X006/E                    | 95       | XG-09X006/E                    | 70       |
| 8                        | XG-06X008/E                    | 85       | XG-09X008/E ●                  | 60       |
| 10                       | XG-06X010/E                    | 75       | XG-09X010/E                    | 50       |
| 12                       | XG-06X012/E                    | 65       | XG-09X012/E                    | 45       |
| 15                       | XG-06X015/E                    | 55       | XG-09X015/E                    | 40       |
| 18                       | XG-06X018/E                    | 45       | XG-09X018/E                    | 38       |
| 22                       | XG-06X022/E                    | 40       | XG-09X022/E                    | 30       |
| 28                       | XG-06X028/E                    | 30       | XG-09X028/E                    | 26       |

| Pipe max. Outside-Ø [mm] | 13,0 mm<br>insulation thickness |          |   |   |
|--------------------------|---------------------------------|----------|---|---|
|                          | Code                            | m/carton |   |   |
| 6                        | XG-13X006/E                     | 45       | - | - |
| 10                       | XG-13X010/E                     | 35       | - | - |
| 12                       | XG-13X012/E                     | 32       | - | - |
| 15                       | XG-13X015/E                     | 28       | - | - |
| 18                       | XG-13X018/E                     | 27       | - | - |
| 22                       | XG-13X022/E                     | 26       | - | - |
| 28                       | XG-13X028/E                     | 20       | - | - |

Length tolerance for tubes

±1,5 %

Thickness tolerance

≤ 8 mm: ±1,0 mm  
 9 - 18 mm: ±1,5 mm  
 19 - 31 mm: ±2,5 mm  
 > 31 mm: ±3,0 mm

● Item not in stock. Delivery on request. [MTO]

## Armaflex XG sheets endless



Width 1,0 m

| Code       | Insulation thickness [mm] | Roll length [m] | m <sup>2</sup> /carton |
|------------|---------------------------|-----------------|------------------------|
| XG-06-99/E | 6,0                       | 15              | 15                     |
| XG-09-99/E | 9,0                       | 10              | 10                     |
| XG-13-99/E | 13,0                      | 8               | 8                      |
| XG-19-99/E | 19,0                      | 6               | 6                      |
| XG-25-99/E | 25,0                      | 4               | 4                      |
| XG-32-99/E | 32,0                      | 3               | 3                      |
| XG-40-99/E | 40,0                      | 7               | 7                      |

|                                       |                    |
|---------------------------------------|--------------------|
| <b>Length tolerance for sheets</b>    | ±1,5 %             |
| <b>Thickness tolerance for sheets</b> | ≤ 6 mm: ±1,0 mm    |
|                                       | 7 - 19 mm: ±1,5 mm |
|                                       | >19 mm: ±2,0 mm    |

## Armaflex XG sheets endless self-adhesive



Width 1,0 m, Color black

| Code        | Insulation thickness [mm] | Roll length [m] | m <sup>2</sup> /carton |
|-------------|---------------------------|-----------------|------------------------|
| XG-06-99/EA | 6,0                       | 15              | 15                     |
| XG-09-99/EA | 9,0                       | 10              | 10                     |
| XG-13-99/EA | 13,0                      | 8               | 8                      |
| XG-19-99/EA | 19,0                      | 6               | 6                      |
| XG-25-99/EA | 25,0                      | 4               | 4                      |
| XG-32-99/EA | 32,0                      | 3               | 3                      |
| XG-40-99/EA | 40,0                      | 7               | 7                      |

|                                       |                    |
|---------------------------------------|--------------------|
| <b>Length tolerance for sheets</b>    | ±1,5 %             |
| <b>Thickness tolerance for sheets</b> | ≤ 6 mm: ±1,0 mm    |
|                                       | 7 - 19 mm: ±1,5 mm |
|                                       | >19 mm: ±2,0 mm    |

## Armaflex XG tapes



Color black, Armaflex XG Top seal tape

| Code       | Width [mm] | Length [m] | Thickness [mm] | Rolls/carton |
|------------|------------|------------|----------------|--------------|
| TS-TAPE-35 | 35,0       | 25         | 0,11           | 9            |

## Armaflex XG tapes self-adhesive



| Code    | Width [mm] | Length [m] | Thickness [mm] | Rolls/carton |
|---------|------------|------------|----------------|--------------|
| XG-TAPE | 50,0       | 15         | 3              | 12           |

### Armacell GmbH

Robert Bosch Str. 10 • 48153 Muenster • Germany  
 Phone +49 (0) 251 / 76 03-0 • Fax +49 (0) 251 / 76 03-448  
 www.armacell.com • info@armacell.com

## UN SYSTÈME COMPLET

Armacell offre une solution complète soigneusement coordonnée et bien pensée pour tous les défis d'isolation

professionnelle : Armaflex XG manchons standards, auto-adhésifs, Lap Seal et Top Seal, couronnes, rouleaux standards et auto-adhésifs et Tape auto-adhésifs + supports de tuyauterie Armafix X pour éviter les ponts thermiques et manchons coupe-feu Armaflex Protect.

La vaste gamme d'accessoires spécialement conçus pour

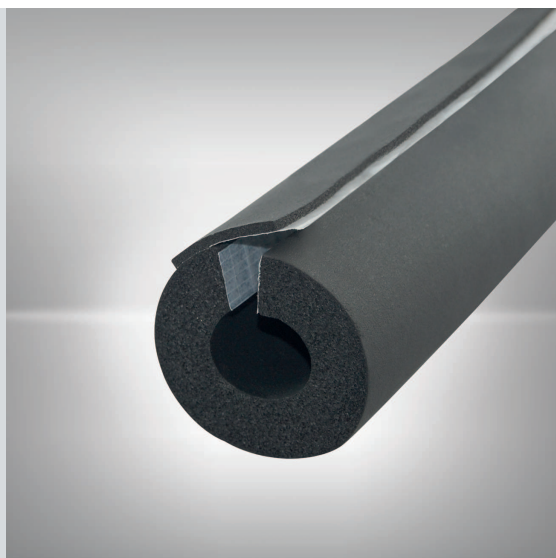
l'application des isolants Armaflex telle la nouvelle génération de colles ou la boîte à outils Armaflex rend l'installation d'autant plus simple.



## ARMAFLEX XG LAP SEAL

### Le manchon fendu auto-adhésif avec bande de recouvrement isolante

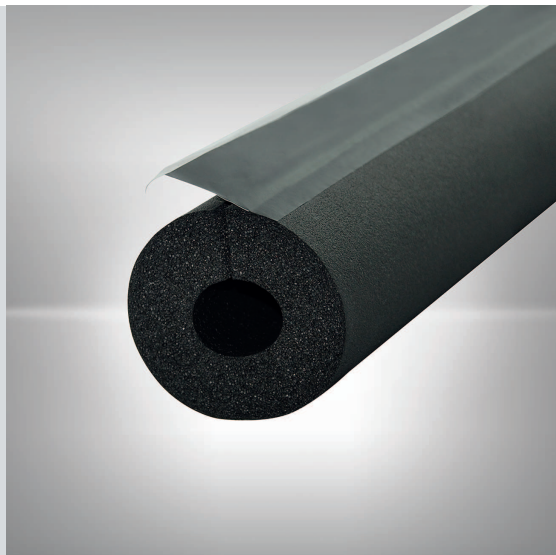
Armaflex XG Lap Seal est un isolant flexible à base d'élastomère spécialement conçu afin de répondre aux exigences du DTU 45.2 pour les réseaux froids des bâtiments tertiaires et commerciaux. Les 3 chants auto-adhésifs permettent non seulement de gagner du temps lors de l'installation mais aussi d'utiliser une moins grande quantité de colles et donc aide à réduire les émissions de solvants. La languette isolante assure une finition efficace, esthétique et de qualité.



## ARMAFLEX XG TOP SEAL

### Le manchon fendu avec bande de recouvrement auto-adhésive en PVC

Armaflex XG Top Seal est un isolant flexible à base d'élastomère spécialement conçu pour améliorer l'efficacité énergétique des tuyauteries de chauffage et sanitaire. La fermeture du joint à l'aide de la bande auto-adhésive en PVC permet de gagner du temps lors de la mise en oeuvre et offre un aspect final esthétique. La gamme couvre un large panel de références en ligne avec les recommandations RT2012.



## ARMAFIX X

### Le support de tuyauterie isolant universel pour lutter contre les ponts thermiques

Armafix X permet d'isoler thermiquement le tuyau du support de fixation dans les multiples applications courantes de CVC. Léger et flexible, il offre la solution contre les ponts thermiques au niveau des supports de fixation, point faible potentiel du système isolé. Le joint longitudinal auto-adhésif permet une installation rapide tandis que la longueur de la pièce en mousse élastomère simplifie l'assemblage et le collage avec l'isolant adjacent.



notes

---

---

---

---

---

---

---

---

---

---

---

---

---

---

---

---

---

---

---

---

---

---

**Armacell GmbH**  
Robert Bosch Str. 10 • 48153 Muenster • Germany  
Phone +49 (0) 251 / 76 03-0 • Fax +49 (0) 251 / 76 03-448  
www.armacell.com • info@armacell.com